

Current Conditions at Neary

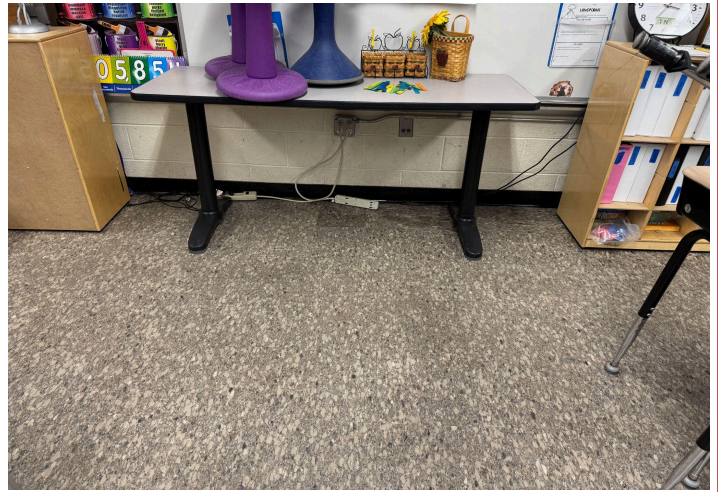
Electrical & Technology Infrastructure

The electrical system is original to the 1970 construction. The system is at capacity and does not have enough capacity to handle any additional equipment.

Outdated Electrical System



Limited Electrical Outlets



Americans with Disabilities Act (ADA) Compliance

The current restrooms are not configured or sized for ADA compliance. The new building will have appropriate spacing and uninterrupted access to all fixtures.

Current Bathroom Access



Doorway is 10" under code



NEARY

BUILDING PROJECT

Roof System

The roof is well beyond its expected life and currently experiences frequent leaking and seam failure. Each year, our Facilities Team is repairing the roof's most strained places - \$15,000 to \$20,000 a year.

Poor Drainage



Failed Seams



Learning Spaces Without Natural Light

Many interior spaces, including the library, at Neary do not have natural light. These spaces are not conducive to quality learning and instruction spaces.

Interior Room



Library



NEARY

BUILDING PROJECT

Kitchen Functionality

The kitchen does not have adequate storage for cooling and freezing food to support a full-service operation.

Walk In Cooler used as storage



Limited Kitchen Equipment and Space



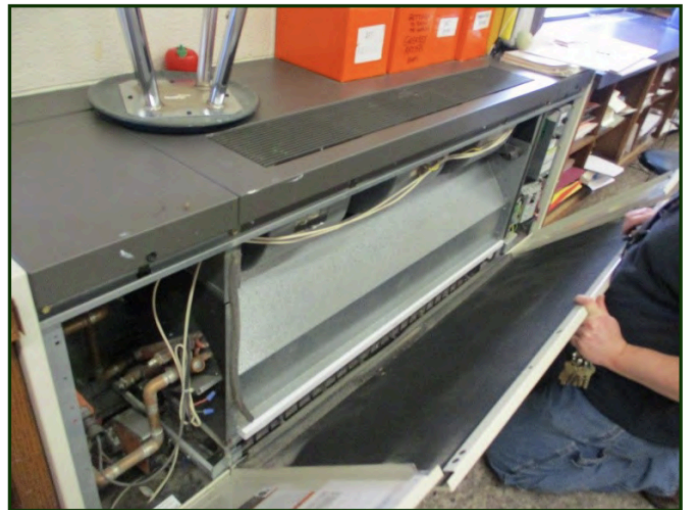
Heating, Ventilation, and Air Conditioning Equipment

The current heating system is fragmented into different types and only portions of the building are supported by air conditioning. The new building will offer improved efficiency with a ground-sourced system for heating and cooling.

Current Rooftop Units



Current Classroom Univents



NEARY

BUILDING PROJECT

Original Windows

Although functional, all windows at Neary are original. They are single-paned windows that are inefficient and are a source of energy efficiency that will be gained with a new building.

Original Window Full View



How air conditioning is achieved



Visual Arts Learning Space

The current art room is a converted classroom with limited demonstration space and no storage or display area.

The new building will offer both storage and display space as well as a demonstration space.

Current Art Room



New Art Room



Learning Commons - Hallway Learning Space

The current building does not offer adaptable extended learning space.
The new building will offer flexible seating and STEM learning spaces.

Current Hallway



Learning Commons



NEARY

BUILDING PROJECT

Gymnasium

The current gymnasium is a split space with inadequate spacing and storage. The current gymnasium does not support current instructional or community needs.

Inadequate Storage / Split Gym



Split Space



Arrowstreet, Inc. provided the New Building images